

SERVICE BULLETIN No.159

E-60 and E-60H QuikLift® Units

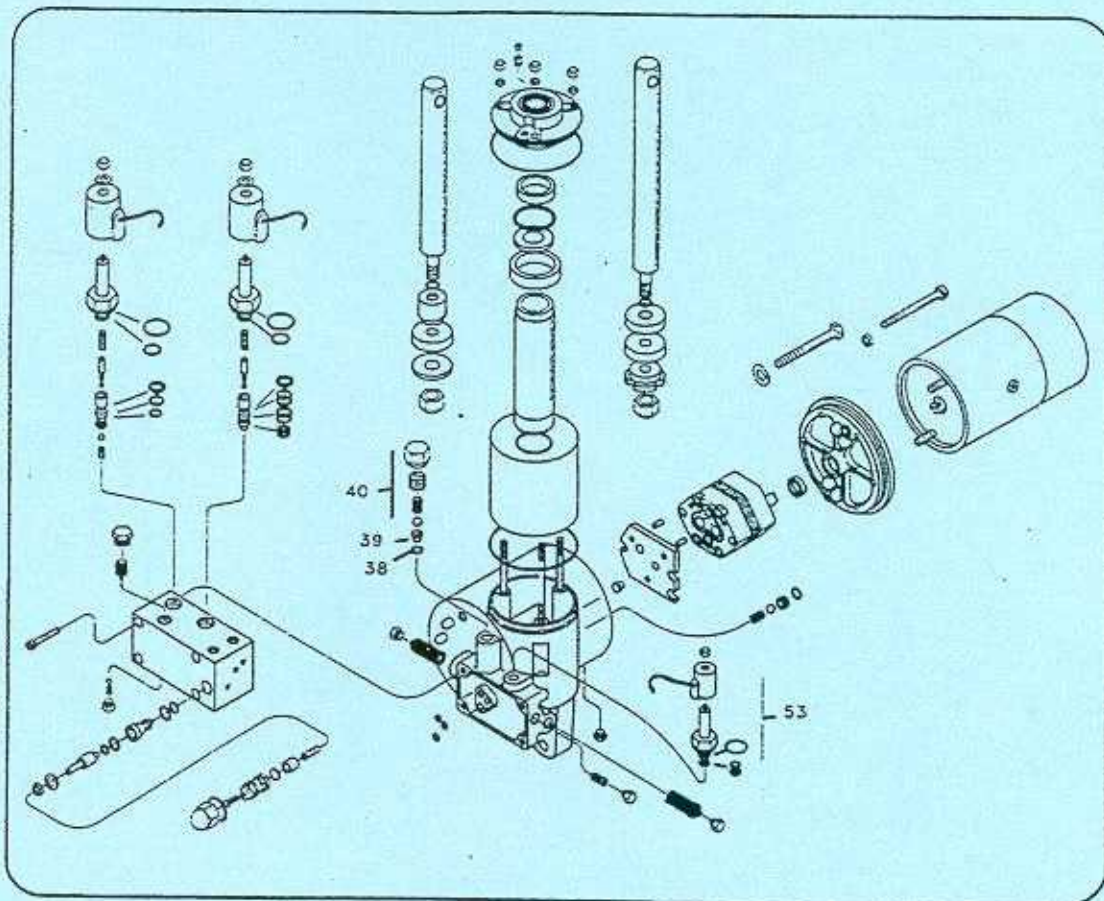
HIGH OPERATING PRESSURE

Reference Form No. 1-663 R5

Reports from the field have indicated that some E-60 and E-60H hydraulic units are developing high pressure due to a loose BALL SEAT item 39 beneath the Pressure Relief Valve Assembly item 40. Among the symptoms of high operating pressure are a No lower situation or Breaking of the Top Cap Assembly Part number 15738. If the Ball Seat is found to be loose, remove the Ball seat and inspect the O-ring for damage. Reinstall Ball Seat and torque to 100 inch pounds. Reset the operating pressure to 2500 P.S.I. **IMPORTANT:** Operating pressure should be checked after the Pressure Relief Cap Nut has been assembled.

Inspection of the Ball Seat should be made prior to delivery on New Installations and over the counter sales.

If you have any questions concerning this Service Bulletin please contact the Service Department.



Meyer Products assumes no responsibility for installations not made in accordance with these instructions